



**Waterloo Catholic  
District School Board**  
Quality, Inclusive, Faith Based Education



# **Welcome!**

# **Rosenberg Boundary Review**

# **Public Open House**

# **John Sweeney CES**

# **November 27, 2024**

# Background

- **Huron-Brigadoon Boundary Review conducted in 2021.**
- **Included:**
  - **John Sweeney**
  - **Blessed Sacrament**
  - **St. Kateri Tekakwitha**
  - **Our Lady of Grace**
- **Rosenberg funding announced January 2022.**
- **St. Josephine Bakhita CES opened September 2023.**
- **Rosenberg scheduled to open September 2025.**

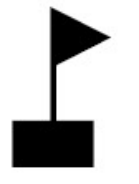

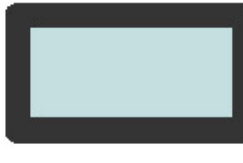
# Existing Boundaries

# New Rosenberg



John Sweeney

St. Josephine Bakhita

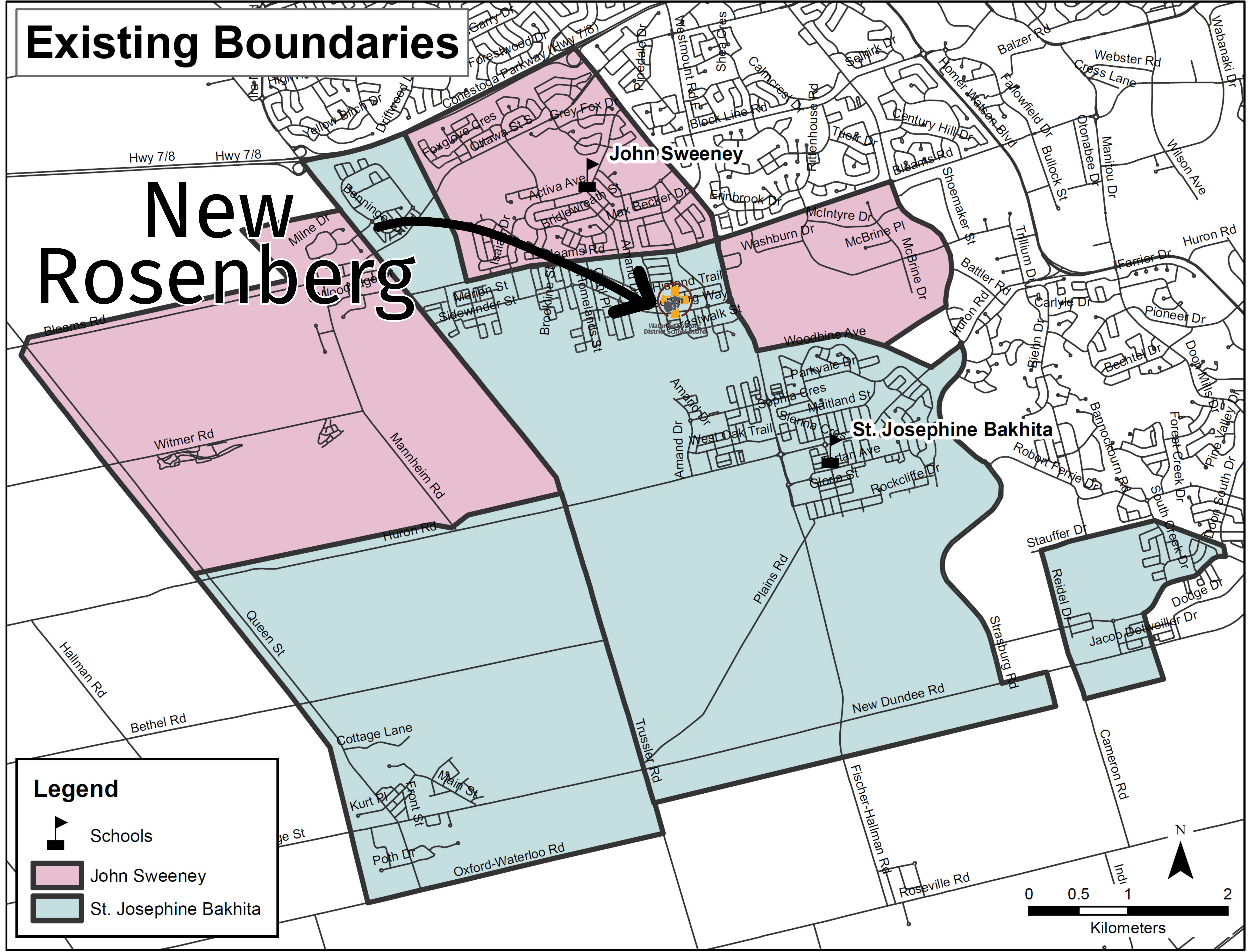
**Legend**

-  Schools
-  John Sweeney
-  St. Josephine Bakhita

N

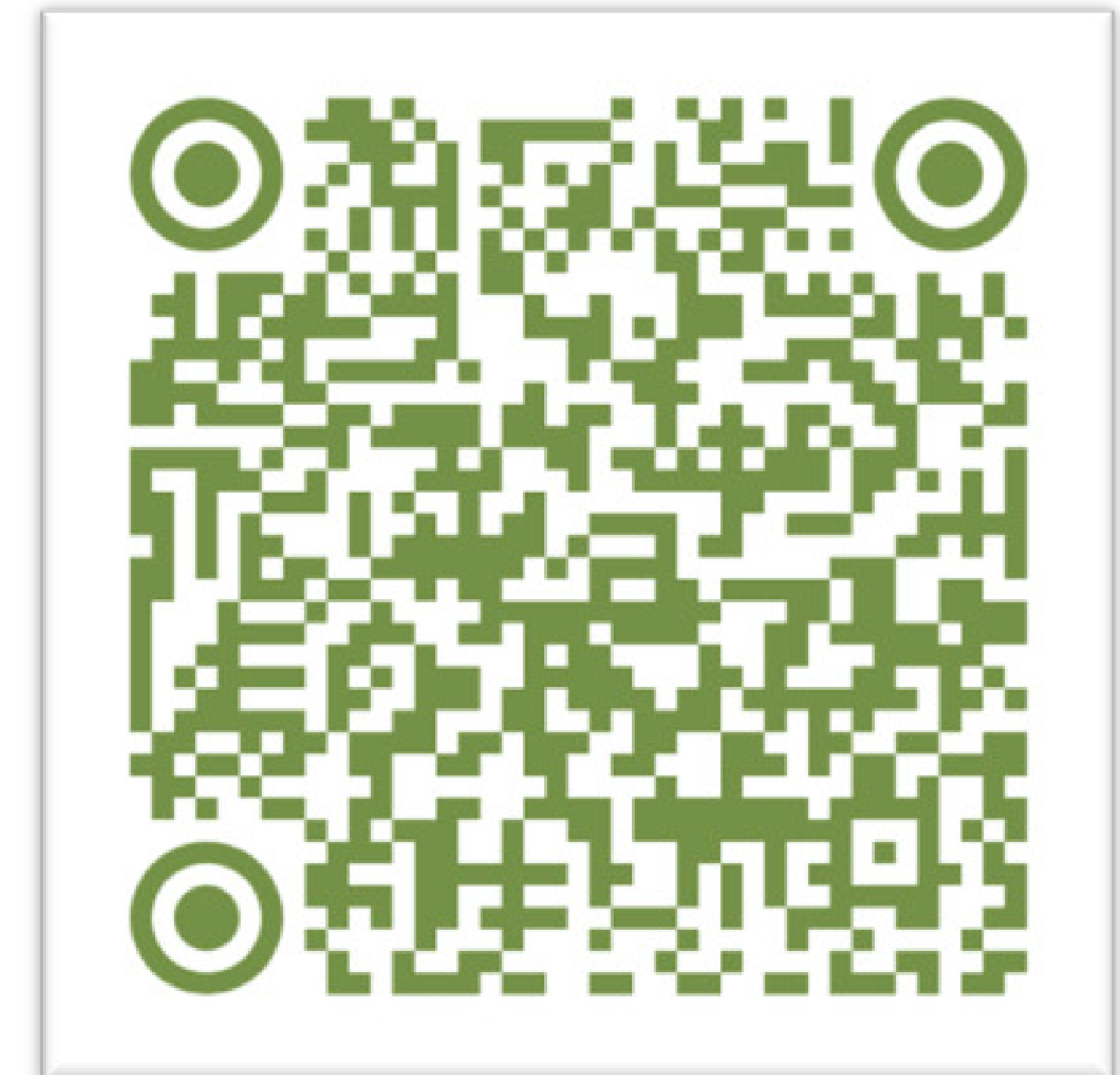
0 0.5 1 2  
Kilometers



# Public Engagement Schedule

Date	Purpose
October 29, 2024 – January 27, 2025	<ul style="list-style-type: none"> <li>Input received via <a href="mailto:Rosenberg@wcdsb.ca">Rosenberg@wcdsb.ca</a></li> </ul>
November 1 – November 29, 2024	<ul style="list-style-type: none"> <li>Online public engagement survey.</li> </ul>
St. Josephine Bakhita CSAC Tuesday, November 5, 2024	<ul style="list-style-type: none"> <li>Planning Staff to present Initial Boundary Review Report to CSAC and receive input.</li> </ul>
John Sweeney CSAC Tuesday, November 12, 2024	<ul style="list-style-type: none"> <li>Planning Staff to present Initial Boundary Review Report to CSAC and receive input.</li> </ul>
Public Open House Wednesday, November 27, 2024 4-7pm, John Sweeney CES Gym	<ul style="list-style-type: none"> <li>Initial Boundary Review Report to be presented, feedback solicited from the school communities, and opportunity to address questions from the public.</li> </ul>
Committee of the Whole Meeting Monday, January 13, 2025	<ul style="list-style-type: none"> <li>Planning Staff to present Final Staff Report to Board of Trustees.</li> <li>Opportunity for delegations.</li> </ul>
Board of Trustees Meeting Monday, January 27, 2025	<ul style="list-style-type: none"> <li>Final Decision to be made by the Board of Trustees.</li> <li>No delegations.*</li> </ul>

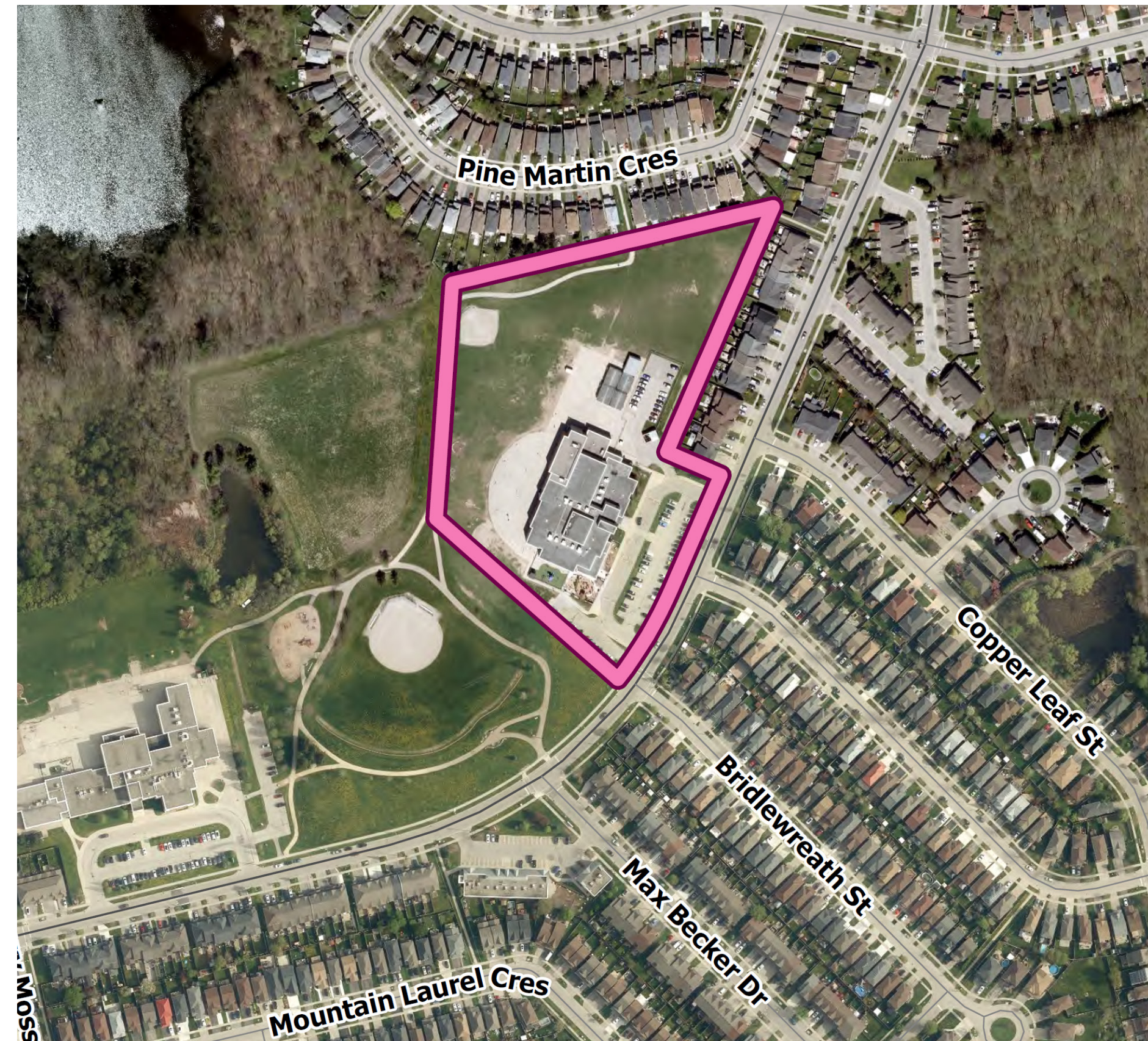
Webpage Link



Survey Link

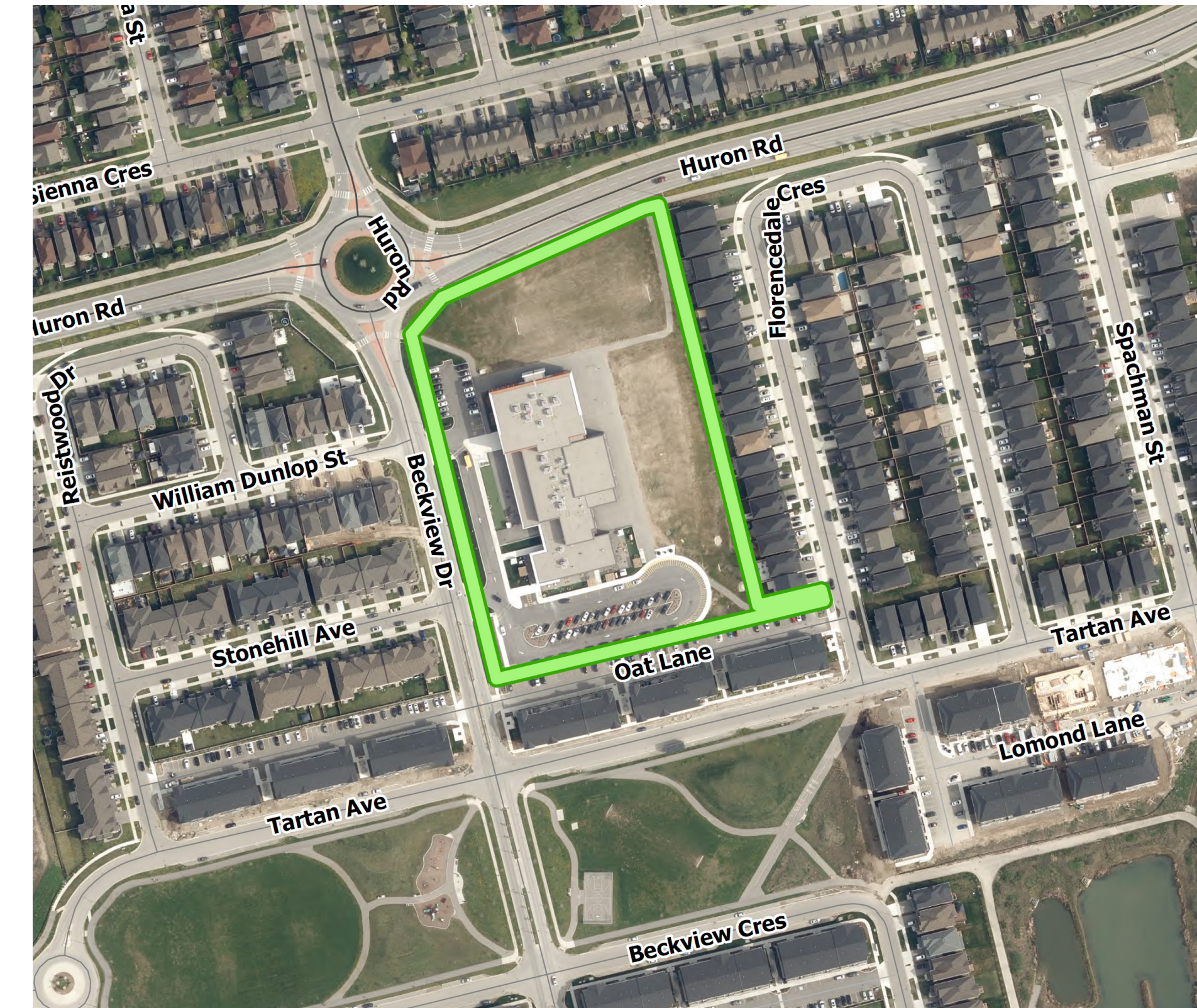


# John Sweeney CES



- JK-8 elementary school
- 611 pupil places
- 5 portables in September 2024
- 707 students in September 2024
- Utilization rate of 116%
- On-site child care centre
- Board and RisingOaks extended day programs

# St. Josephine Bakhita CES

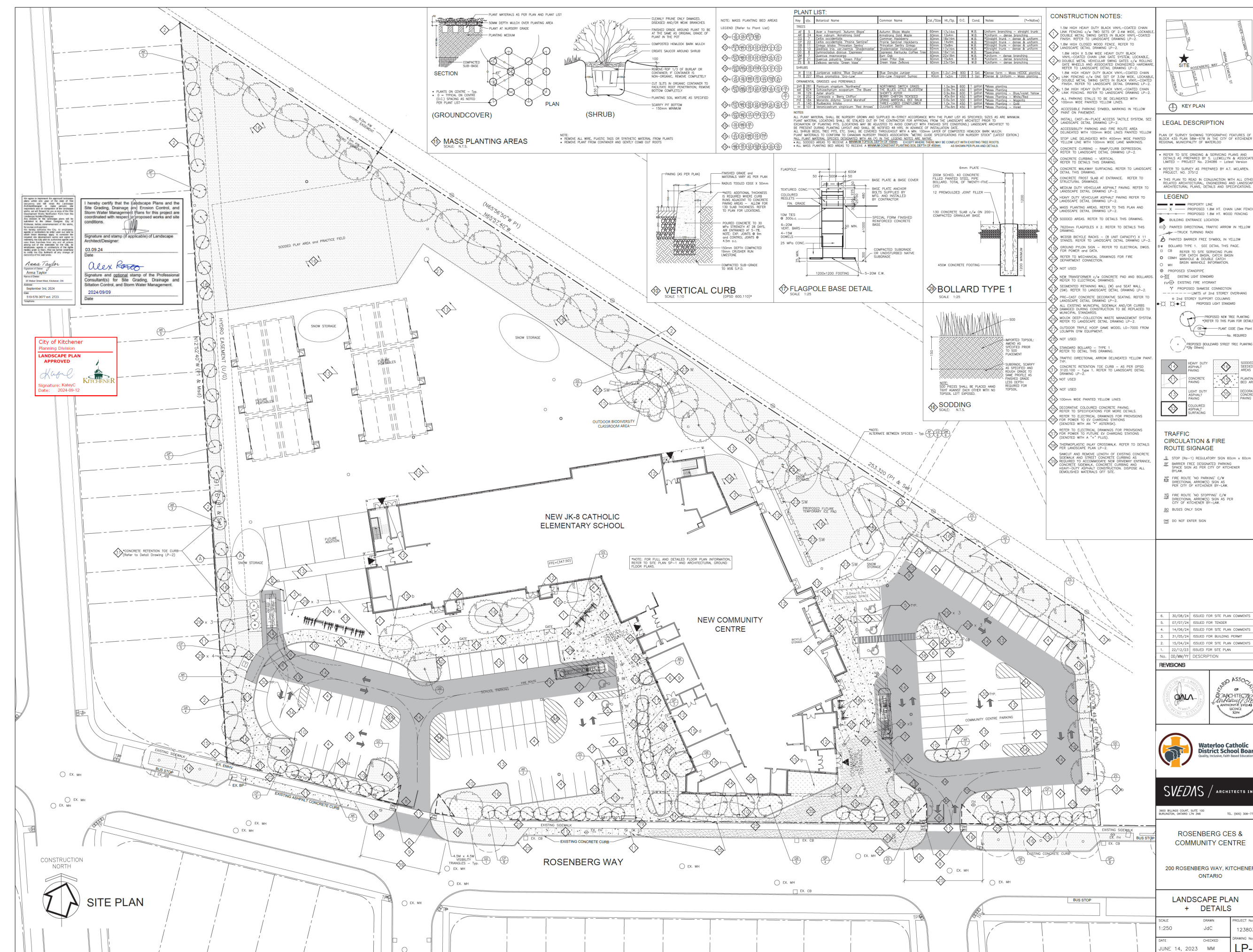


- JK-8 elementary school
- 657 pupil place capacity
- 8 portables in September 2024
- 810 students in September 2024
- Utilization rate of 123%
- On-site child care centre
- Board and YMCA extended day programs

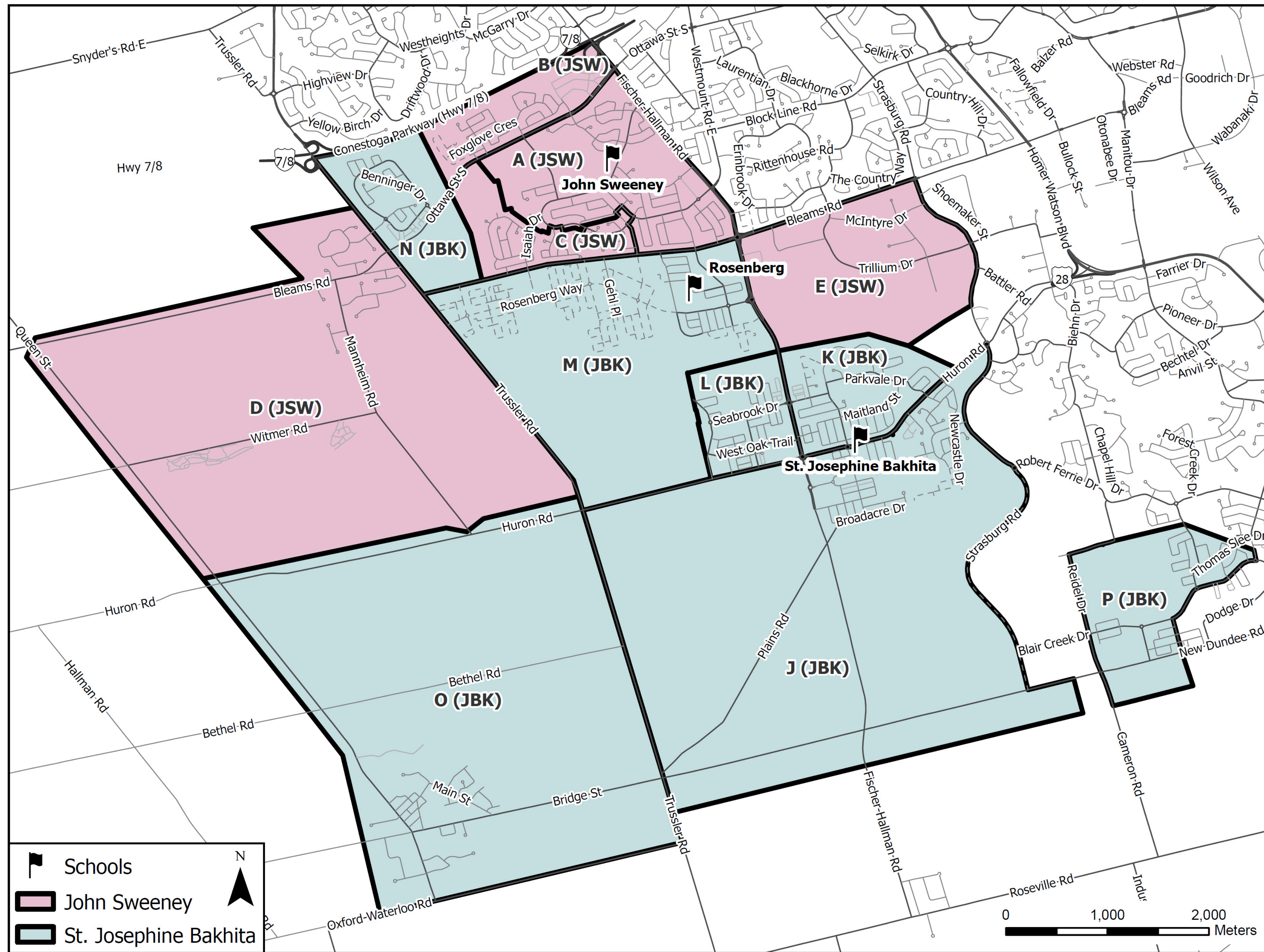
# New Rosenberg School



- Planned JK-8 elementary school
- Scheduled to open September 2025
- 527 pupil place capacity
- Co-located Williamsburg Community Centre
- Board operated extended day (subject to viability)



# Existing Boundaries / Sub-Areas



John Sweeney Sub-Areas	2024	2025	2026	2027	2028	2029	2034
<b>A (JSW) - Home Area + Out of Boundary</b>	388	381	389	389	397	394	436
<b>B (JSW)</b>	123	126	131	136	135	135	160
<b>C (JSW)</b>	175	184	183	185	191	196	232
<b>D (JSW)</b>	21	20	21	19	17	20	25
<b>E (JSW)</b>	0	0	9	16	30	34	45
<b>TOTAL</b>	<b>707</b>	<b>712</b>	<b>732</b>	<b>744</b>	<b>769</b>	<b>779</b>	<b>898</b>

St. Josephine Bakhita Sub-Areas	2024	2025	2026	2027	2028	2029	2034
<b>J (JBK) - Home Area + Out of Boundary</b>	264	284	293	304	329	350	339
<b>K (JBK)</b>	295	307	317	322	329	323	372
<b>L (JBK)</b>	124	125	134	146	156	160	204
<b>M (JBK)</b>	39	76	158	233	303	358	524
<b>N (JBK)</b>	20	44	56	59	67	71	33
<b>O (JBK)</b>	3	3	3	4	6	7	15
<b>P (JBK)</b>	65	77	91	108	136	147	182
<b>TOTAL</b>	<b>810</b>	<b>917</b>	<b>1053</b>	<b>1177</b>	<b>1326</b>	<b>1417</b>	<b>1669</b>

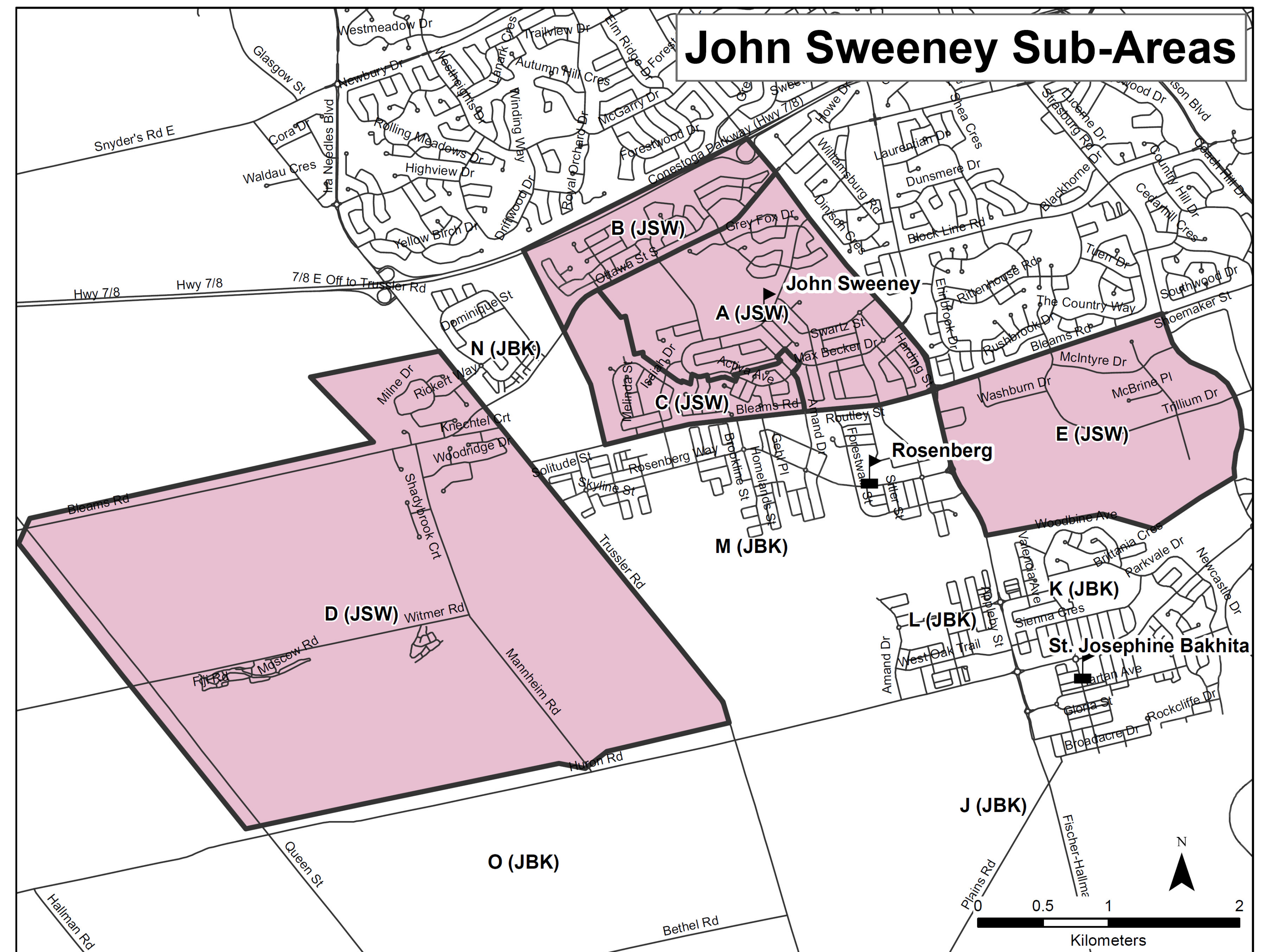
Elementary Schools	OTG	2024			2025			2028			2030			2035		
		Enrolment	Utilization	Portables	Enrolment	Utilization	Portables	Enrolment	Utilization	Portables	Enrolment	Utilization	Portables	Enrolment	Utilization	Portables
<b>John Sweeney</b>	<b>611</b>	707	116%	5	712	117%	5	769	126%	7	801	131%	8	923	151%	13
<b>St. Josephine Bakhita</b>	<b>657</b>	810	123%	8	917	140%	11	1326	202%	29	1528	233%	38	1629	248%	42
<b>Total</b>	<b>1268</b>	<b>1517</b>	<b>120%</b>	<b>13</b>	<b>1629</b>	<b>128%</b>	<b>16</b>	<b>2095</b>	<b>165%</b>	<b>36</b>	<b>2329</b>	<b>184%</b>	<b>46</b>	<b>2552</b>	<b>201%</b>	<b>55</b>

# Status Quo Enrolment Projections

Elementary Schools	OTG	2024			2025			2028			2030			2035		
		Enrolment	Utilization	Portables	Enrolment	Utilization	Portables	Enrolment	Utilization	Portables	Enrolment	Utilization	Portables	Enrolment	Utilization	Portables
John Sweeney	611	707	116%	5	712	117%	5	769	126%	7	801	131%	8	923	151%	13
St. Josephine Bakhita	657	810	123%	8	917	140%	11	1326	202%	29	1528	233%	38	1629	248%	42
<b>Total</b>	<b>1268</b>	<b>1517</b>	<b>120%</b>	<b>13</b>	<b>1629</b>	<b>128%</b>	<b>16</b>	<b>2095</b>	<b>165%</b>	<b>36</b>	<b>2329</b>	<b>184%</b>	<b>46</b>	<b>2552</b>	<b>201%</b>	<b>55</b>

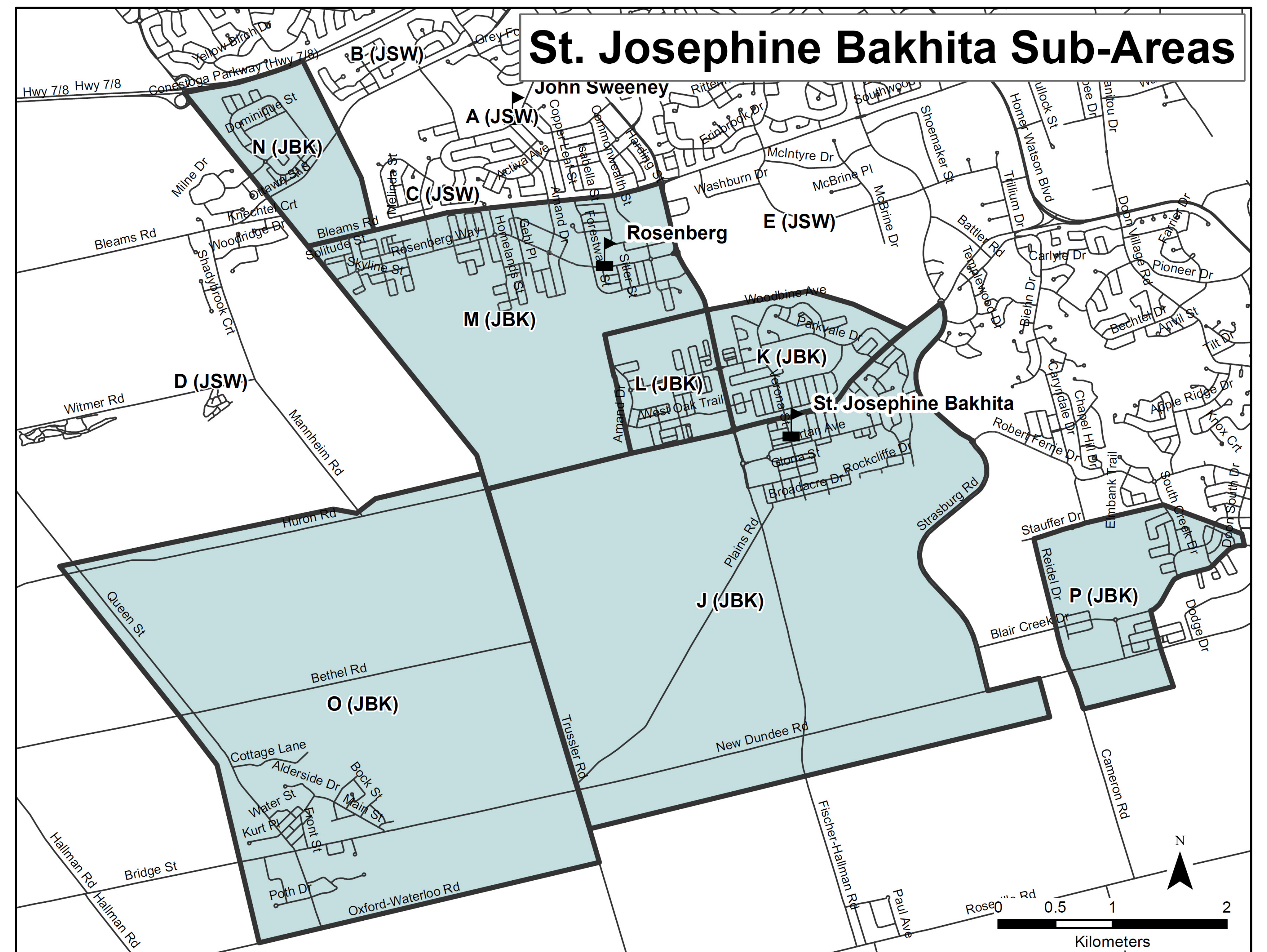
# John Sweeney Sub Area Enrolment Projections

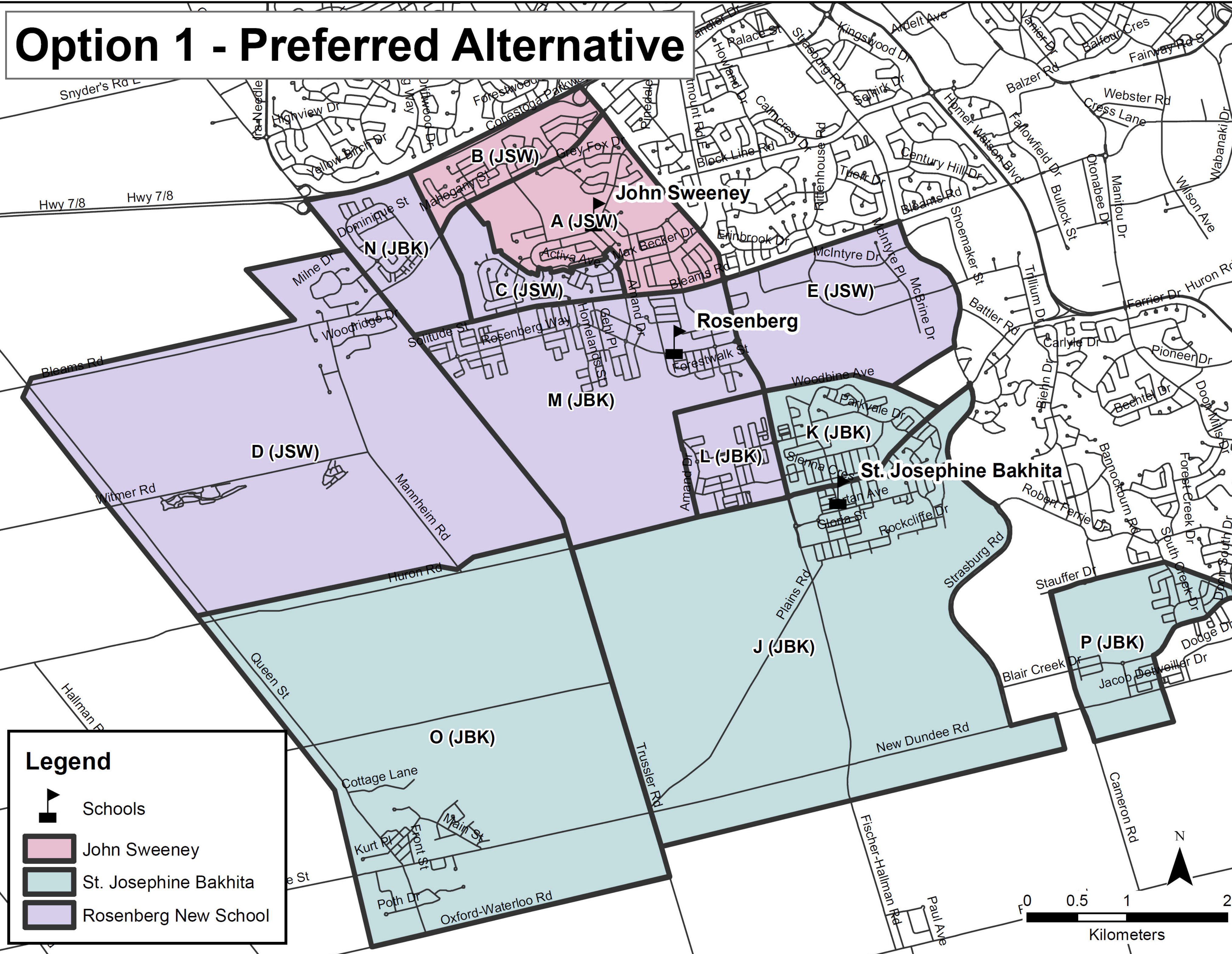
John Sweeney Sub-Areas	2024	2025	2026	2027	2028	2029	2034
<b>A (JSW) - Home Area + Out of Boundary</b>	388	381	389	389	397	394	436
<b>B (JSW)</b>	123	126	131	136	135	135	160
<b>C (JSW)</b>	175	184	183	185	191	196	232
<b>D (JSW)</b>	21	20	21	19	17	20	25
<b>E (JSW)</b>	0	0	9	16	30	34	45
<b>TOTAL</b>	<b>707</b>	<b>712</b>	<b>732</b>	<b>744</b>	<b>769</b>	<b>779</b>	<b>898</b>



# St. Josephine Bakhita Sub Area Enrolment Projections

St. Josephine Bakhita Sub-Areas	2024	2025	2026	2027	2028	2029	2034
J (JBK) - Home Area + Out of Boundary	264	284	293	304	329	350	339
K (JBK)	295	307	317	322	329	323	372
L (JBK)	124	125	134	146	156	160	204
M (JBK)	39	76	158	233	303	358	524
N (JBK)	20	44	56	59	67	71	33
O (JBK)	3	3	3	4	6	7	15
P (JBK)	65	77	91	108	136	147	182
<b>TOTAL</b>	<b>810</b>	<b>917</b>	<b>1053</b>	<b>1177</b>	<b>1326</b>	<b>1417</b>	<b>1669</b>





# Option 1 - Preferred Alternative

Option 1 proposes to:

- Move Sub-Areas C, D, and E from John Sweeney to Rosenberg; and
- Move Sub-Areas L, M, and N from St. Josephine Bakhita to Rosenberg.

Elementary Schools	OTG (Capacity)	2025			2028			2030			2035		
		Enrolment	Utilization	Portables	Enrolment	Utilization	Portables	Enrolment	Utilization	Portables	Enrolment	Utilization	Portables
John Sweeney	611	507	83%	-4	531	87%	-3	538	88%	-3	615	101%	1
St. Josephine Bakhita	657	672	102%	1	800	122%	7	873	133%	10	923	140%	12
Rosenberg New School	527	450	85%	-3	763	145%	10	918	174%	17	1015	193%	21
<b>Total</b>	<b>1795</b>	<b>1629</b>	<b>91%</b>	<b>1</b>	<b>2095</b>	<b>117%</b>	<b>17</b>	<b>2329</b>	<b>130%</b>	<b>27</b>	<b>2552</b>	<b>142%</b>	<b>33</b>

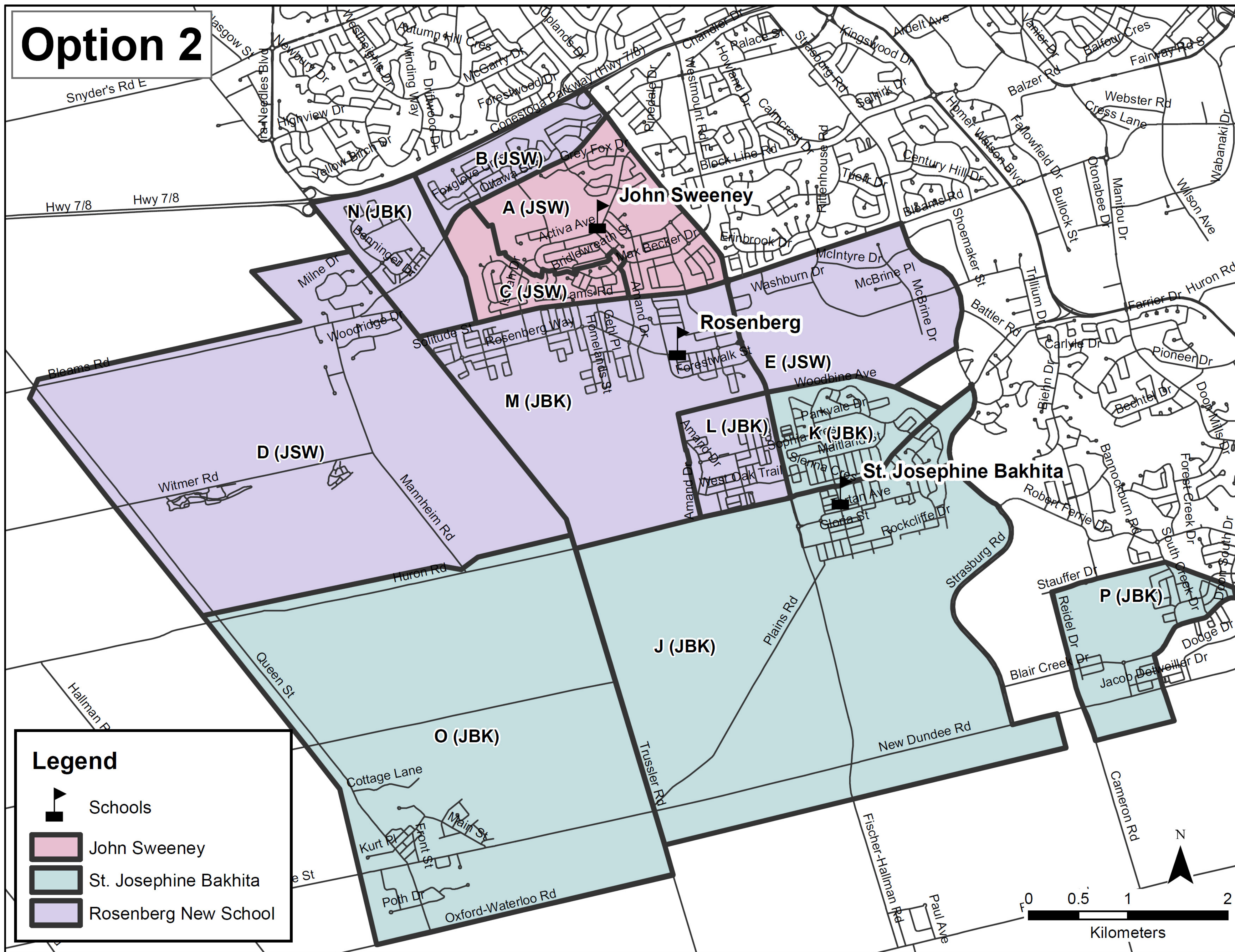
# Option 1 - Preferred Alternative

## Advantages:

- Creates contiguous boundaries.
- Relieves more enrolment pressure from John Sweeney.
- Relieves enrolment pressure from St. Josephine Bakhita.

## Disadvantages:

- Could affect approximately 340 students, but this does not factor in potential legacy exceptions.
- Sub-area L would move for the second time.
- Potential walkers in sub-area C to be redirected from John Sweeney to Rosenberg.



## Option 2

- Option 2 proposes to:
- Move Sub-Areas B, D, and E from John Sweeney to Rosenberg;
  - Move Sub-Areas L, M, and N from St. Josephine Bakhita to Rosenberg.

Elementary Schools	OTG (Capacity)	2025			2028			2030			2035		
		Enrolment	Utilization	Portables	Enrolment	Utilization	Portables	Enrolment	Utilization	Portables	Enrolment	Utilization	Portables
John Sweeney	611	566	93%	-1	587	96%	-1	605	99%	0	686	112%	4
St. Josephine Bakhita	657	672	102%	1	800	122%	7	873	133%	10	923	140%	12
Rosenberg New School	527	392	74%	-6	707	134%	8	851	161%	14	944	179%	18
<b>Total</b>	<b>1795</b>	<b>1629</b>	<b>91%</b>	<b>1</b>	<b>2095</b>	<b>117%</b>	<b>14</b>	<b>2329</b>	<b>130%</b>	<b>24</b>	<b>2552</b>	<b>142%</b>	<b>33</b>

# Option 2

## **Advantages:**

- Relieves enrolment pressure from John Sweeney.
- Relieves enrolment pressure from St. Josephine Bakhita.

## **Disadvantages:**

- Could affect approximately 290 students, but this does not factor in any potential legacy exceptions.
- Sub-area L would move for the second time.
- Potential walkers in sub-area B to be redirected from John Sweeney to Rosenberg.